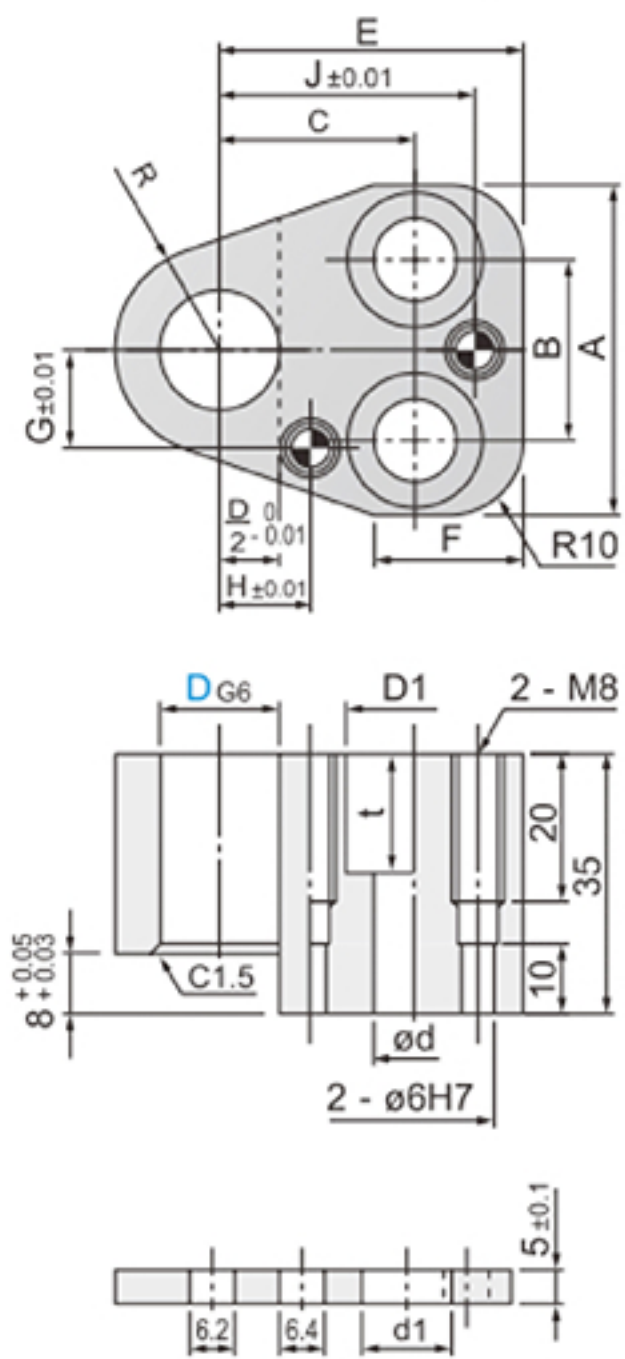
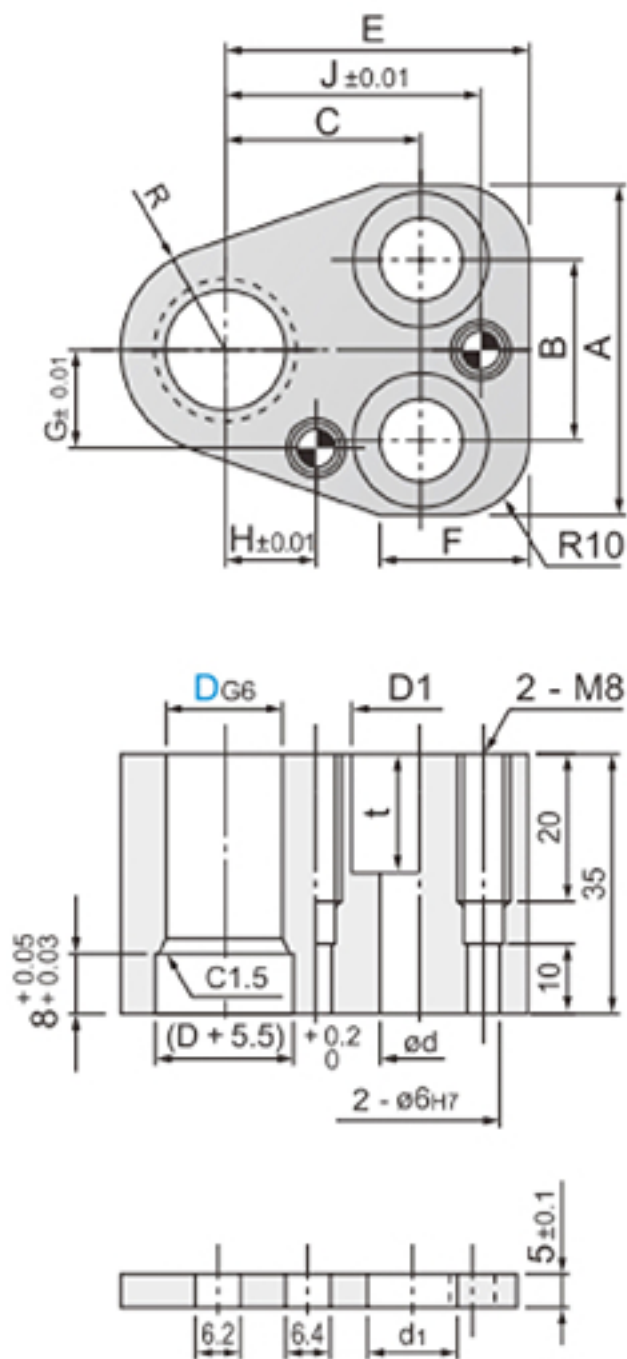


WHAP-AP
WHAPAR
WBPC
WHAP-AN
WHAP-FP
WHAPFR
WHAP-FN





| Catalog No. | ① | ② | ③ | ④ | ⑤ |
|-------------|---|---|---|---|---|
| WHAP-AP | ○ | ○ | ○ | ○ | ○ |
| WHAPAR | ○ | | ○ | ○ | ○ |
| WBPC | | ○ | | | |
| WHAP-AN | ○ | | | | |



| Catalog No. | ① | ② | ③ | ④ | ⑤ |
|-------------|---|---|---|---|---|
| WHAP-FP | ○ | ○ | ○ | ○ | ○ |
| WHAPFR | ○ | | ○ | ○ | ○ |
| WBPC | | ○ | | | |
| WHAP-FN | ○ | | | | |

ORDER Catalog No. WHAP-AP 25

| Catalog No. | | | D g8 | A | B | C | E | F | G | H | J | R | D1 | d | t | d1 | A |
|---------------|---------------|----|------------------|----|----|----|----|----|----|----|----|------|----|----|----|----|-----------------------------------|
| Type | | D | | | | | | | | | | | | | | | |
| WHAP-AP ①②③④⑤ | WHAP-FP ①②③④⑤ | 10 | +0.014 +0.005 | 37 | 20 | 21 | 35 | 20 | 10 | 9 | 29 | 9.5 | 14 | 9 | 15 | 10 | ①M8 - 40 ④MSTM6 - 30 ⑤MSW8 |
| WHAPAR ①②③④ | WHAPFR ①②③④ | 13 | +0.017 | 43 | 26 | 23 | 38 | | 13 | 11 | 32 | 12 | | | | | |
| WBPC ② | WBPC ② | 16 | +0.006 | 44 | 24 | 26 | 40 | | | 12 | 34 | 14 | | | | | |
| WHAP-AN ① | WHAP-FN ① | 20 | +0.020 | 48 | 28 | 27 | 42 | | 16 | 14 | 36 | 17 | 17 | 11 | 19 | 12 | ①M10 - 40 ④MSTM6 - 30 ⑤MSW8 |
| | | 25 | +0.007 | 50 | 30 | 30 | 46 | | 18 | 17 | 39 | 19.5 | | | | | |

Using Features :

1. It is widely Apply to mould manufacturing and processing industries.
2. The round shape is matched with the round blade punch without stopping surface, and the non-circular shape is matched with the shoulder belt stopping surface punch.
3. Comply with the upgraded RoHS2.0 ten material environmental protection standards.

